

MT70-F-Eclipse-ID Integral driver

Suspended/Surface

encapsulite

ILLUMINATING BY DESIGN



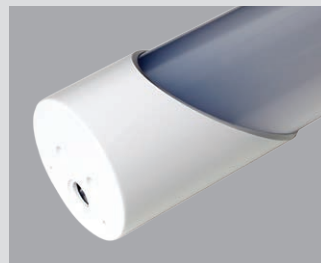
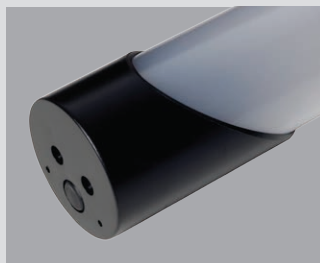
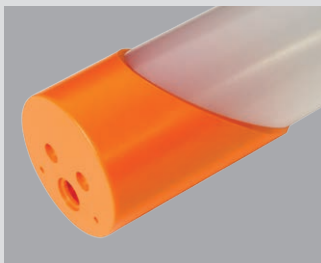
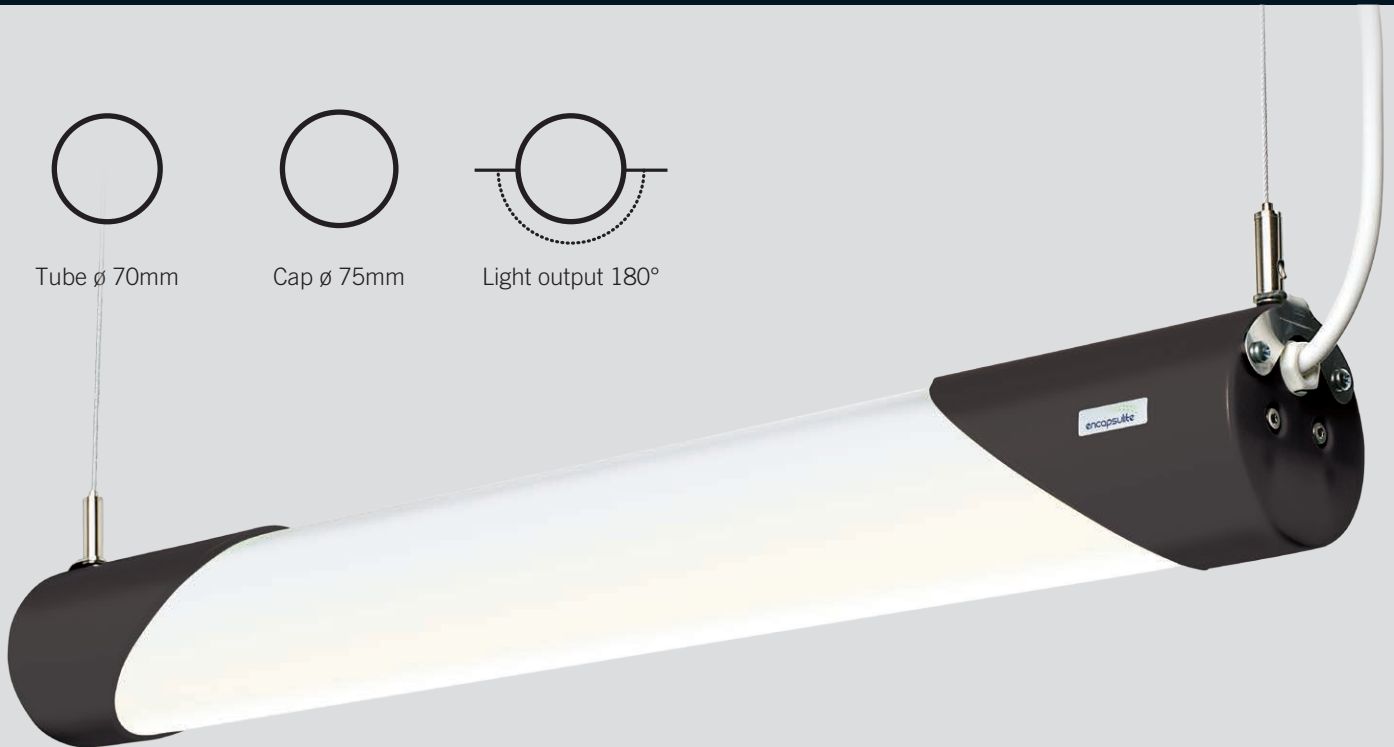
Tube \varnothing 70mm



Cap \varnothing 75mm



Light output 180°



Tubular diffused LED light, coloured polycarbonate V0 rated end caps.

The MT70-F-Eclipse ID is a flexible robust LED diffused lit tube design, this can be suspended horizontally or surface mounted. The mounting of the internal LEDs offers a 180° distribution of light through its polycarbonate opal diffuser.

The MT70-F-Eclipse ID is an incredibly versatile linear lighting solution. Black or white end caps from stock, colour end caps to order.

70mm diameter, (75mm \varnothing end caps) the MT70-F-Eclipse ID makes use of efficient LED technology offering switched or DALI dimming options for a controllable level of light output.

Suitable for almost any interior/dry application.



MT70-F-Eclipse-ID Integral driver

Suspended/Surface



ILLUMINATING BY DESIGN

Light source information

LED/Electronic Driver 3000k 4000k 5000k.

Design

Can be suspended horizontally or surface mounted.

Polycarbonate opal diffuser with coloured end caps of choice.

IP20 rated as standard.

Class I, ta 25°C, 850GWT.

Dimming

Non-dimmable as standard.

DALI or 1-10 available.

Installation

Two suspension points for fully adjustable horizontal suspension.

Surface mounting with discreet fixings.

Optics

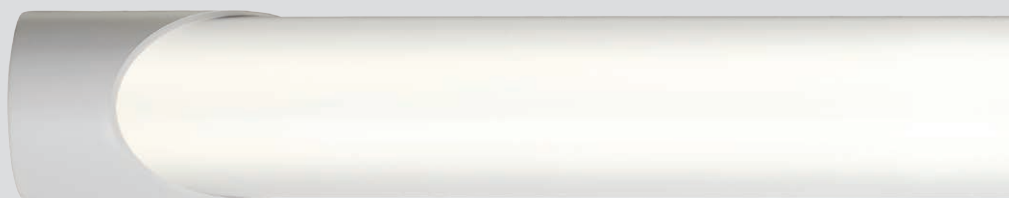
Opal diffuser.

Photometric data available.

Miscellaneous

3hr Emergency available with or without DALI.

If you would like to change something, please ask.



Mounting options



Suspension



Surface mount

MT70-F-ELIPSE-ID INTEGRAL DRIVER SUSPENDED/SURFACE

PART NR	CLEAR/SATIN	WATTS W	LENGTH mm	LM/W	CIRCUIT POWER W	CE	230v 50-60 Hz
MT70-F1-Elipse	CL or SC	9.8	595	89.5	12	ta 25°C	Class I
MT70-F2-Elipse	CL or SC	19.6	1175	98.1	22	IP20	LED
MT70-F3-Elipse	CL or SC	29.4	1760	99.9	32	EEL A	850 GWT
MT70-F4-Elipse	CL or SC	39.2	2360	98.1	43		
MT70-F2-Elipse EM	CL or SC	22.6	1175	98.1	25		
MT70-F3-Elipse EM	CL or SC	32.4	1760	99.9	35		

EM Clear output 325 Lm. EM Satin output 276 Lm.

Weitere Informationen/Optionen unter +49 (0) 2241 844 933
oder per E-Mail info@encapsulite-europe.com