

# MT70-Elipse-RD Remote driver

Suspended/Surface

**encapsulite**

ILLUMINATING BY DESIGN



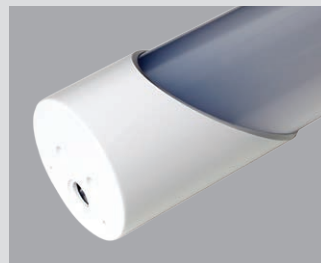
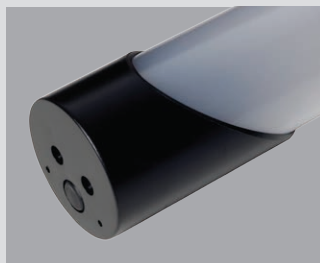
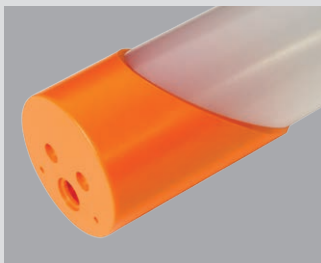
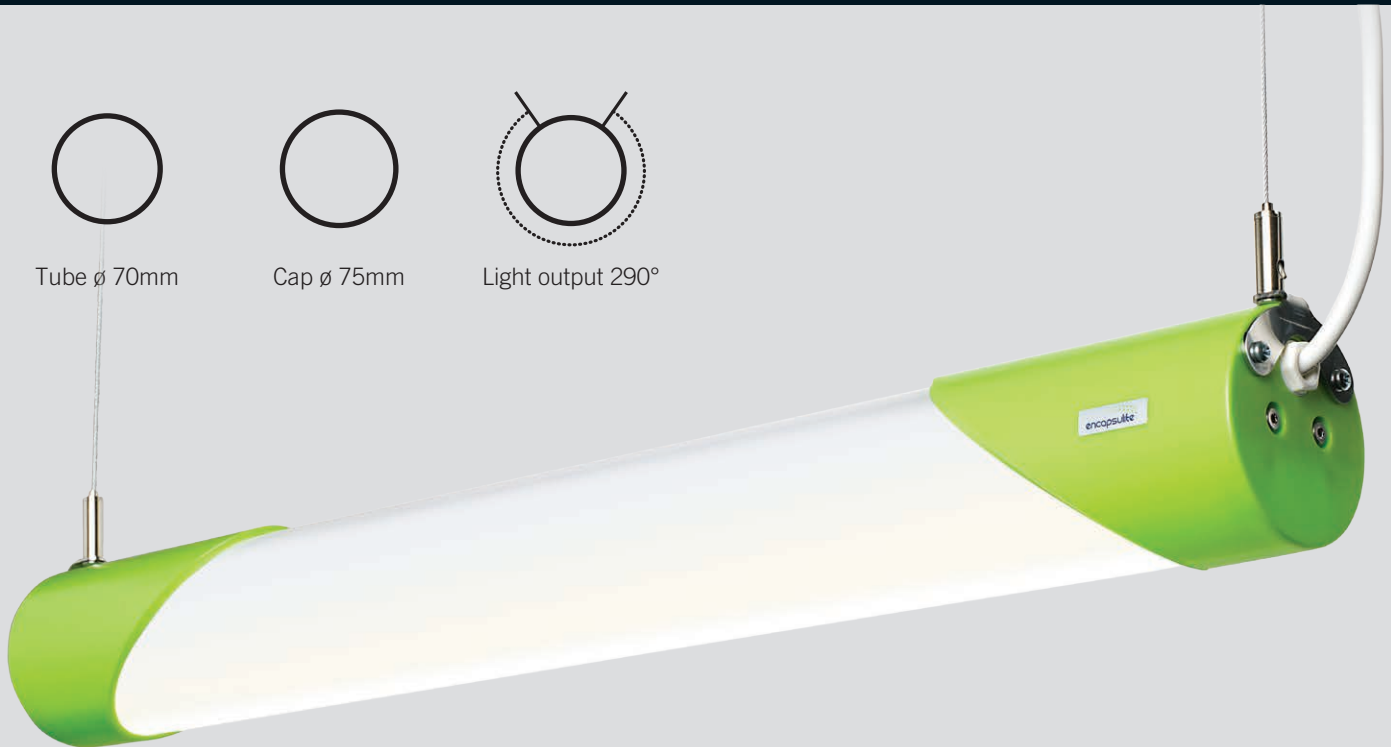
Tube  $\varnothing$  70mm



Cap  $\varnothing$  75mm



Light output 290°



## Tubular diffused LED light, coloured polycarbonate V0 rated end caps.

The MT70-Elipse RD is a flexible robust LED diffused lit tube design, this can be suspended horizontally or surface mounted. The mounting of the internal LEDs offers a 290° distribution of light through its polycarbonate opal diffuser, Remote switched or dimmable drivers can be 5m from light.

The MT70-Elipse RD is an incredibly versatile linear lighting solution. Black or white end caps from stock, colour end caps to order.

70mm diameter, (75mm  $\varnothing$  end caps) the MT70-Elipse RD makes use of efficient LED technology offering switched or DALI dimming options for a controllable level of light output.

Suitable for almost any interior/dry application.



# MT70-Elipse-RD Remote driver

Suspended/Surface

## Light source information

LED/Electronic Driver 3000k 4000k 5000k  
other variants to order please enquire.

LED outputs available from 12w-43w.

## Design

Can be suspended horizontally  
or surface mounted.

Polycarbonate opal diffuser with coloured  
end caps of choice.

IP20 rated as standard.

Class II, ta 25°C, 850GWT.

## Dimming

Non-dimmable as standard.

DALI or 1-10 available.

## Installation

Two suspension points for fully adjustable  
horizontal suspension.

Surface mounting with discreet fixings.

## Optics

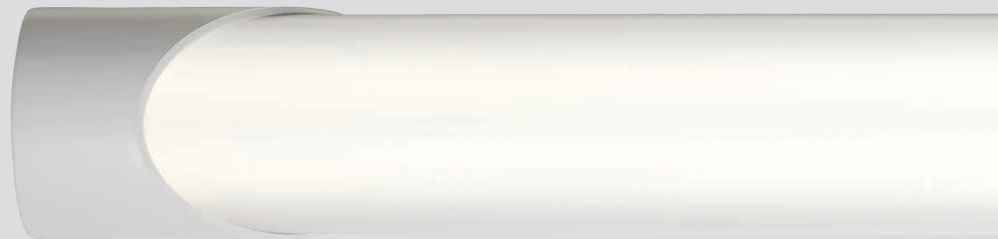
Opal diffuser.

Clear diffuser available.

Photometric data available.

## Miscellaneous

If you would like to change something,  
please ask.



## Mounting options



Suspension



Surface mount

## MT70-ELIPSE-RD REMOTE DRIVER SUSPENDED/SURFACE

PART NR	LENGTH mm	LM/W	CIRCUIT POWER W	LUMEN W
MT70-Elipse-RD 2	595	104	16	1605
MT70-Elipse-RD 3	895	125	22	2765
MT70-Elipse-RD 4	1175	129	30	3655
MT70-Elipse-RD 5	1465	126	35	4400



230v  
50-60  
Hz

IP20

LED

ta  
25°C

Class II

EEL  
A

850  
GWT

Weitere Informationen/Optionen unter **+49 (0) 2241 - 844 933**  
oder per E-Mail [info@encapsulite-europe.com](mailto:info@encapsulite-europe.com)