

ER-LED Batten ID

Surface

**encapsulite**

ILLUMINATING BY DESIGN



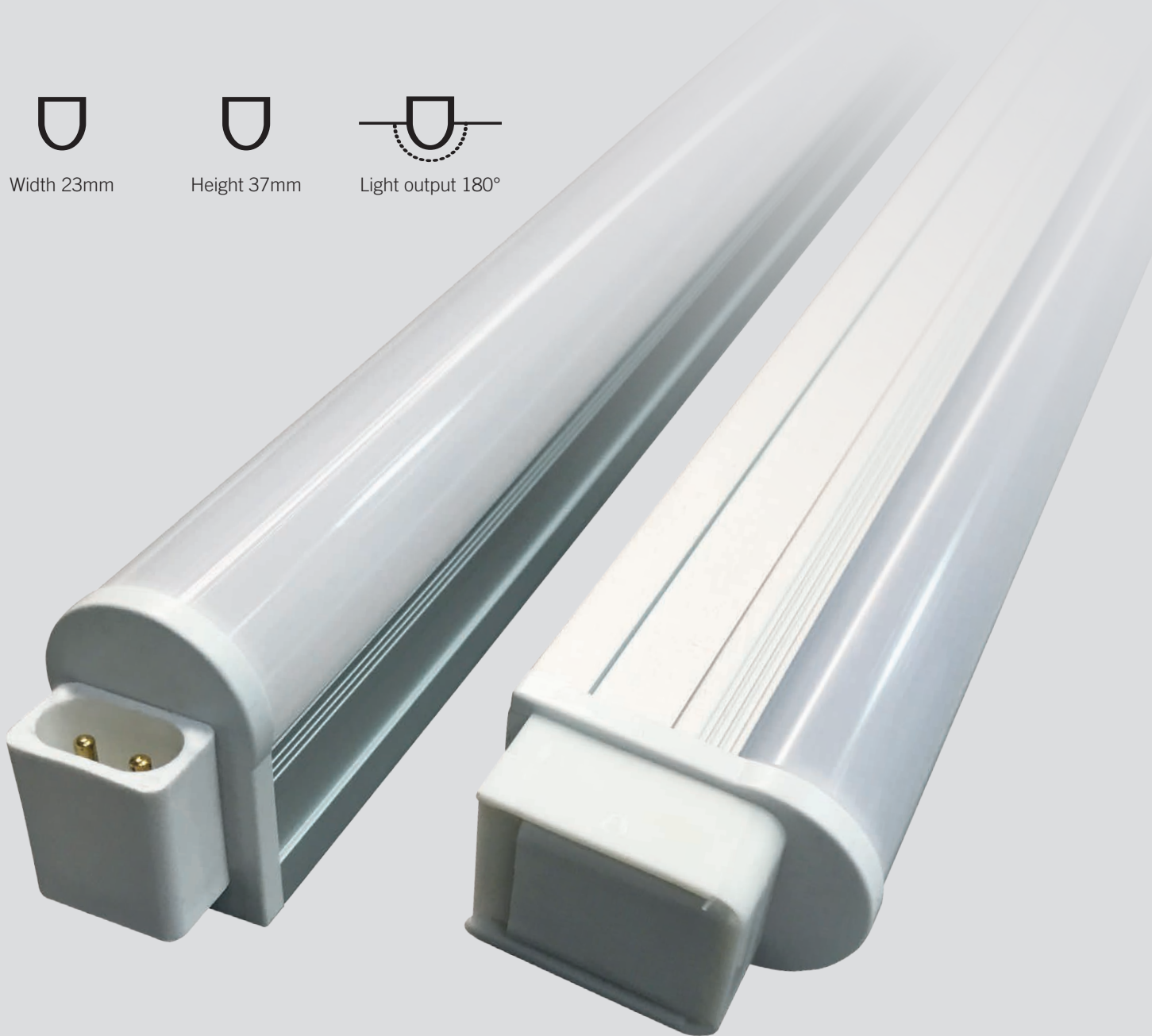
Width 23mm



Height 37mm



Light output 180°



Aluminium batten with polycarbonate diffused LED and integral driver.

The ER-LED Batten is a robust LED diffused lit batten design, perfect for surface mounting. A 180-degree distribution of light through the polycarbonate opal diffuser and linked mains voltage connection via an assortment of specifically designed plugs and leads, makes this product extremely versatile.

Suitable for almost any interior/dry application, do not insulate.



ER-LED Batten ID

Surface

Light source information

LED/Electronic Driver 3000k, 4000k and 6500k.

Design

Surface mounted.

Polycarbonate Opal diffuser.

IP20 rated as standard.

Class II, ta 25°C.

Dimming

Non-dimmable as standard.

Installation

Surface mounting with discreet fixings.

Do not exceed 400w per run of lights.

10w 40 pieces, 15w 26 pieces,
20w 20 pieces.

Optics

Opal Diffuser.

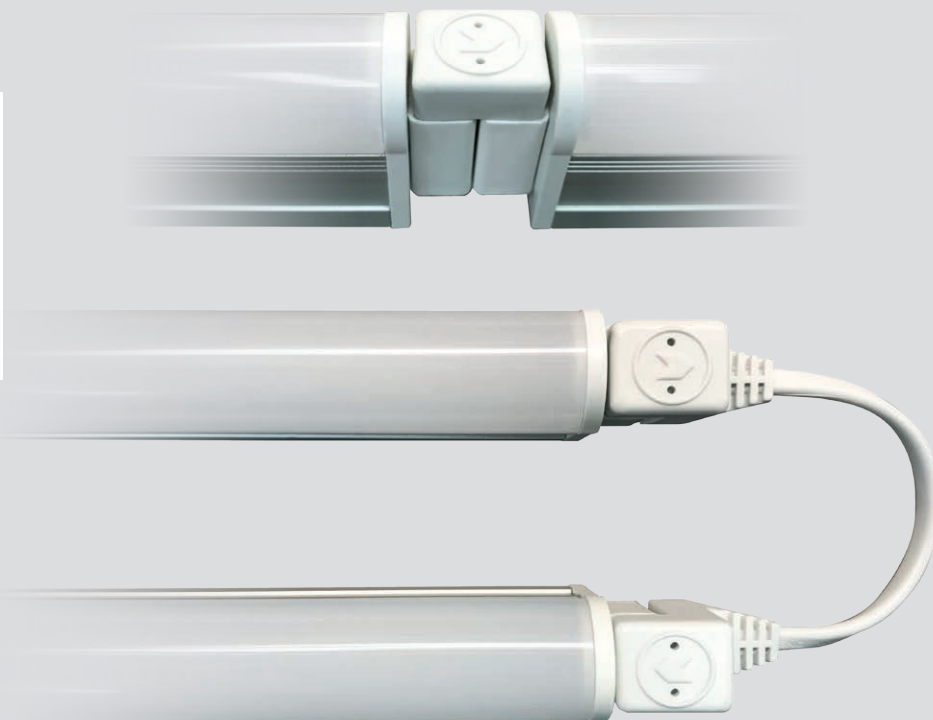
Miscellaneous

If you would like to change something,
please ask.

Mounting options



Surface mount clips



ER-LED BATTEN SURFACE

PART No	WATTS w	LENGTH mm	Lm
ER-LED Batten 10w	10	595	60
ER-LED Batten 15w	15	895	60
ER-LED Batten 20w	20	1195	60



Weitere Informationen/Optionen unter +49 (0) 2241 844 933
oder per E-Mail info@encapsulite-europe.com